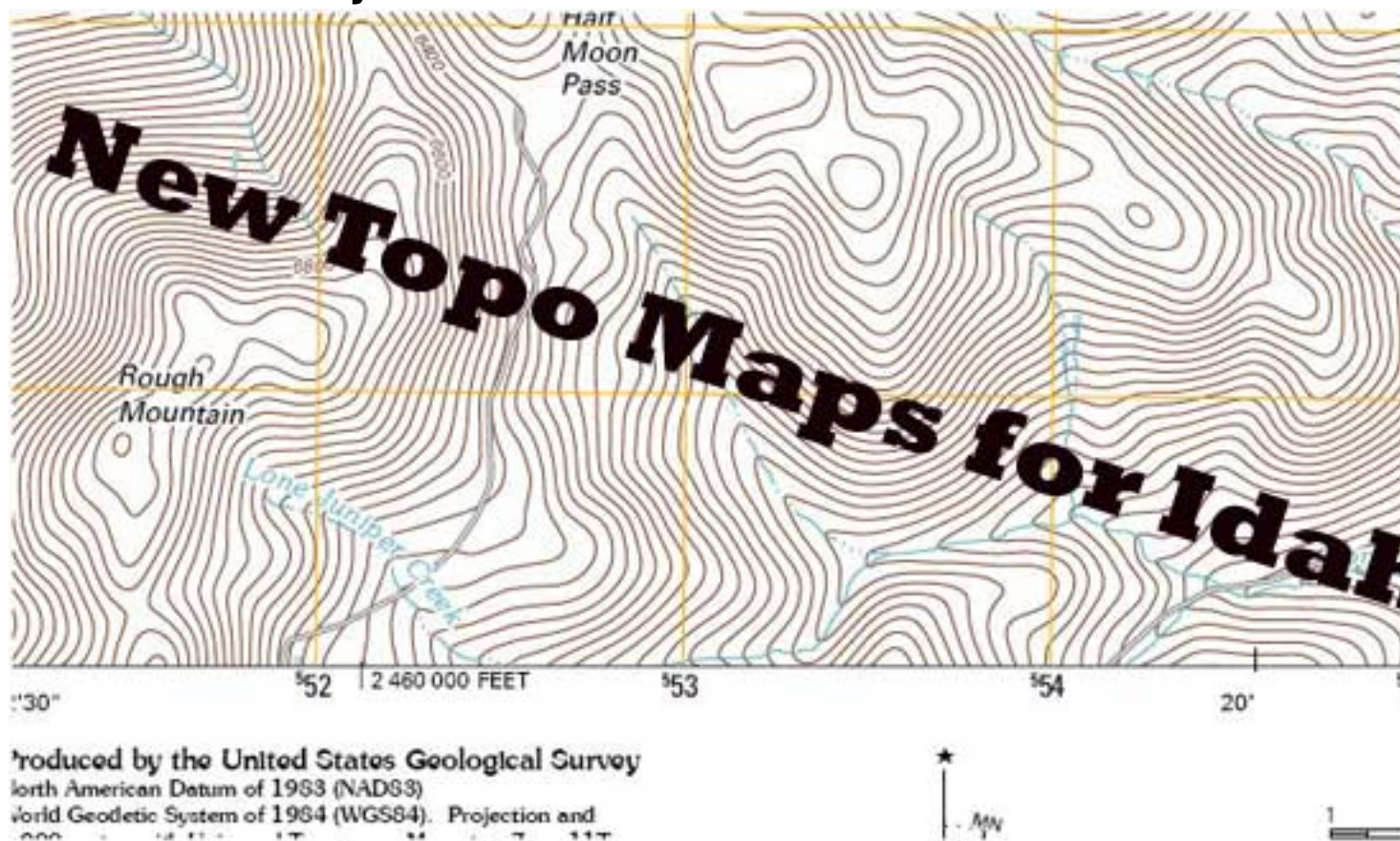


# Idaho Topo Maps for Rock Hounds, Hunters, Hikers and ATV Folks – They Are Free



The United States Geological Survey is in the process of creating new topographical maps for Idaho...and the most of the US. These new generation maps now include satellite imagery along with the usual elevation contours. This might or might not be a great thing for outdoor enthusiasts such as hikers, rock hounds, ATV'er and hunters.

### My Review of the New Topo Maps

I'm a little disappointed with the new generation maps for the following reasons:

- They have eliminated some (a lot) place names from the maps
- Old mine sites are not included and this might be a concern for rock hounds.
- Elevation contours numbers are not marked as frequently as the old maps and peaks do not have their elevation indicated.
- Currently available for only southern Idaho.

### What I like about the new generation Topo Maps

- The visual display is easier to read. They are digital and much cleaner than the old maps.

## New Idaho Topo Maps for Outdoor People

Written by Tim Bondy

Sunday, 12 December 2010 18:55 - Last Updated Sunday, 12 December 2010 19:14

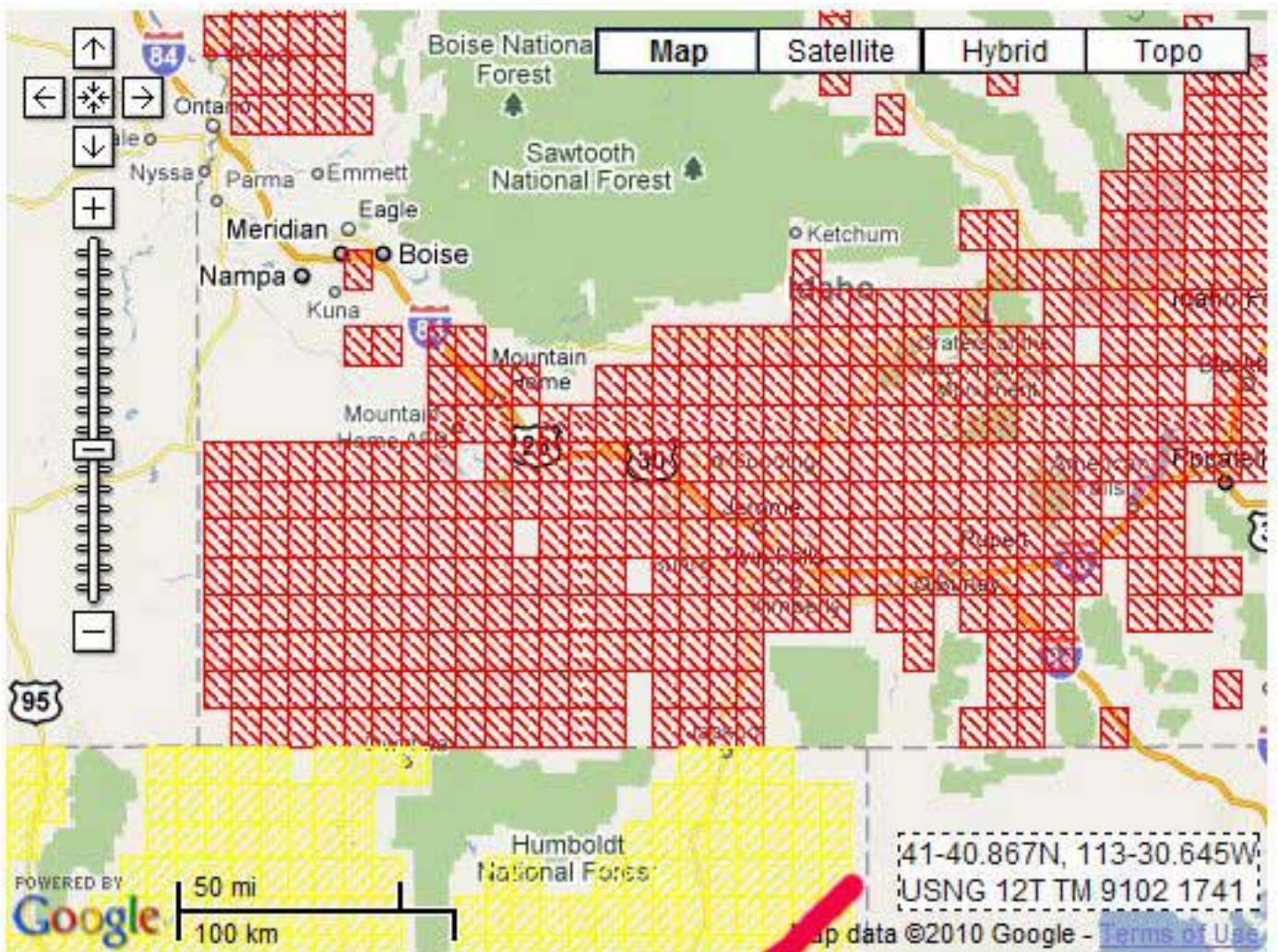
- The satellite data overlay helps visually fill in data such as unmarked roads and trails.
- They are free to download but so are the old topo maps.
- Currently available for for most of the Owyhee Mountains and Desert.

### How to Download Topo Maps

1. Go to the USGS Map Locator website at:

[http://store.usgs.gov/b2c\\_usgs/usgs/maplocator/\(xcm=r3standardpitrex\\_prd&layout=6\\_1\\_61\\_48&uiarea=2&ctype=areaDetails&carearea=%24ROOT\)/do](http://store.usgs.gov/b2c_usgs/usgs/maplocator/(xcm=r3standardpitrex_prd&layout=6_1_61_48&uiarea=2&ctype=areaDetails&carearea=%24ROOT)/do)


2. Zoom in to the general location you would like to explore and get maps.




Clear Markers

Reset Map

Hide US Topo and "Digital Maps - Beta"

 US Topo

 "Digital Maps - Beta"

**Click the Orange Button**

[About USGS Maps](#)

[About US PDF Maps](#)

[About US Topo](#)

[US Topo Quickstart](#)

## New Idaho Topo Maps for Outdoor People

Written by Tim Bondy

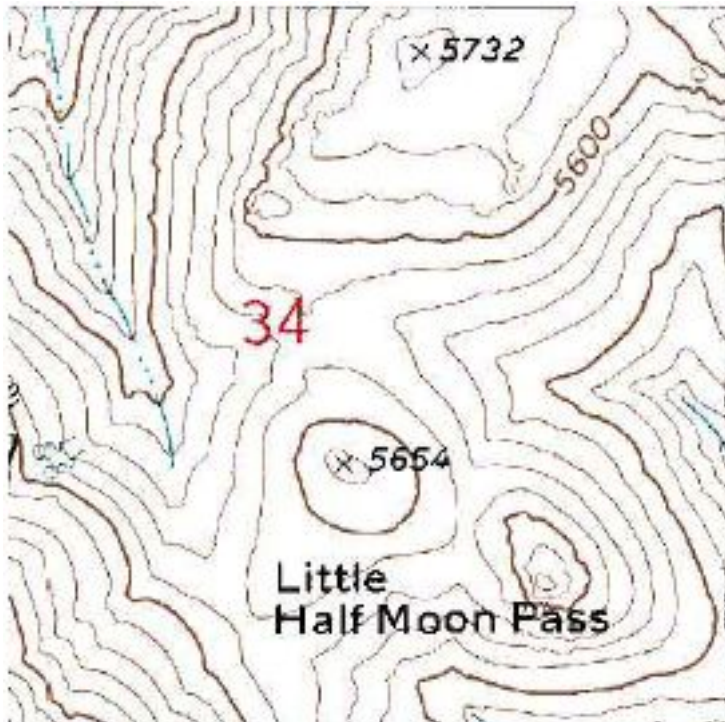
Sunday, 12 December 2010 18:55 - Last Updated Sunday, 12 December 2010 19:14

---

3. Click the orange button and take note where the "red hashed" areas are.
4. Zoom in even closer to find the exact location you want maps.
5. Click the "MARK POINTS" radial button on the right side of the page.
6. Click on the map to drop a marker. Click the marker and download the map to your computer.
7. Open the map in your favorite PDF program.

### Visual Comparison of Maps

#### *Old Topo Map of Little Half Moon Pass in the Owyhee Mountains*



#### *New Topo Map of Little Half Moon Pass with Satellite Imagery*

# New Idaho Topo Maps for Outdoor People

Written by Tim Bondy

Sunday, 12 December 2010 18:55 - Last Updated Sunday, 12 December 2010 19:14

---



*New Topo Map of Little Half Moon Pass without Satellite Imagery*



*What if you could highlight areas on the map that are difficult to hike or camp in? Would you*